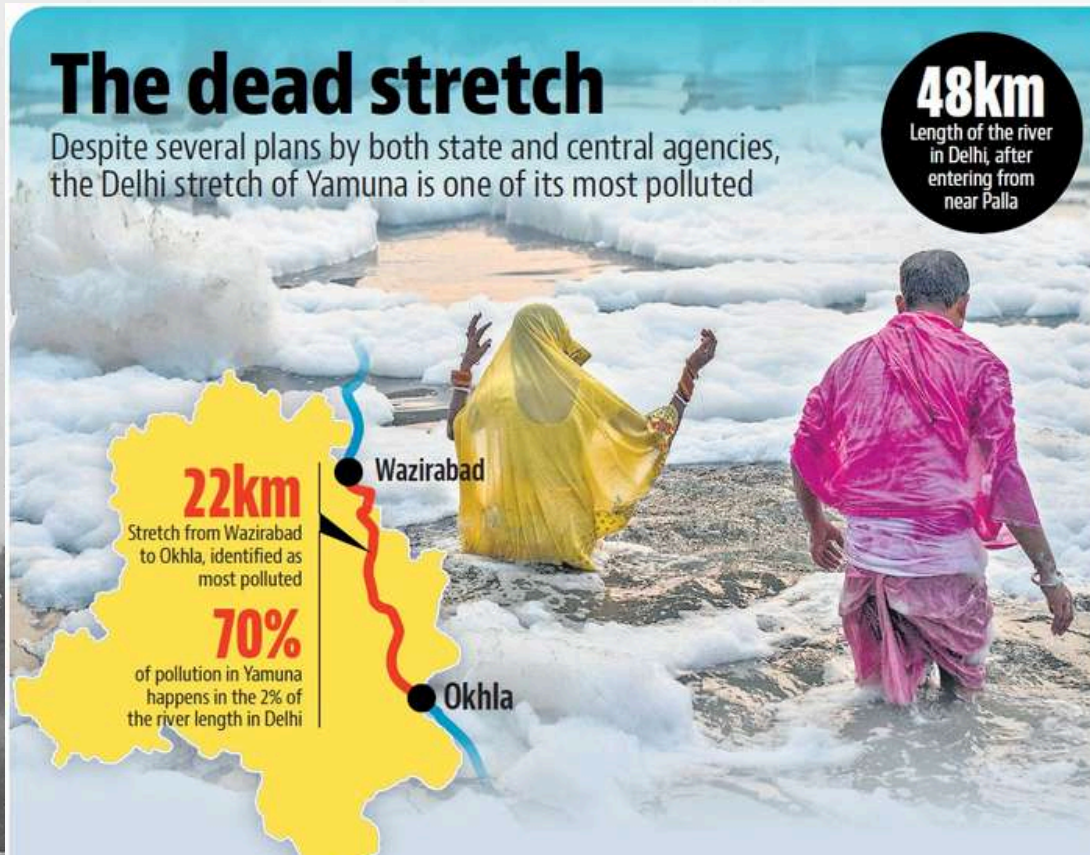


The dead stretch

Despite several plans by both state and central agencies, the Delhi stretch of Yamuna is one of its most polluted

48km
Length of the river in Delhi, after entering from near Palla



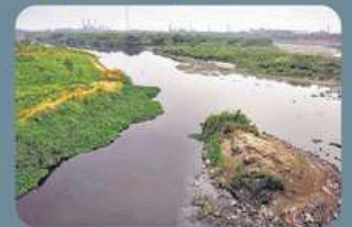
Agencies involved

- DJB - for sewage networks
- DSIIDC - for industrial effluents and CETPs
- Upper Yamuna River Board - for inter-state management and e-flow
- DDA - for flood plain maintenance
- MCDs - for solid waste and effluents in unplanned areas
- Neighbouring states: UP and Haryana

Previous restoration plans

- Yamuna Action Plan 1 (1993-2003)
- Yamuna Action Plan 2 (2003--continuing)
- Interceptor sewer project (2006)
- Nirmal Yamuna revitalisation project (2017)
- Key projects under Namami Gange (Yamuna is a tributary)
- Series of NGT judgments (2015-2019)

Experts speak



- Ecological flow should be restored
- Unplanned urbanisation should be checked
- Prioritise tackling industrial pollutants
- Formulate comprehensive plan involving neighbouring states

Delhi govt's 6-pt action plan

- Capacity of sewage treatment plants to be increased to 850MGD, upgrading of existing facilities
- In-situ treatment with new technology in 4 drains: Najafgarh, Badshahpur, Supplementary and Ghazipur
- CETP to be made functional/upgraded and violators units to be shut down
- Community toilets in JJ clusters, effluents to be linked to sewage system
- Increasing household sewage connections
- Desilting and rehabilitation of sewer system

Causes of pollution

- Solid waste dumping
- Raw sewage from unplanned areas
- Discharge from habitations and dhobi ghats
- Untreated industrial effluents
- Practices like idol immersion

Main polluting drains

Najafgarh, Supplementary, Shahdara



Associate Editor: Kamaldeep kumar

Publisher

Earth Root Foundation

456, Pocket B, Sector-13, Dwarka, New Delhi-110078

www.earthrootfoundation.org | info@earthrootfoundation.org | +91 8766317774

